



Port & Steel Operations

# AMSTEEL Operation Report

M/V RUKIA - I  
Operation Report



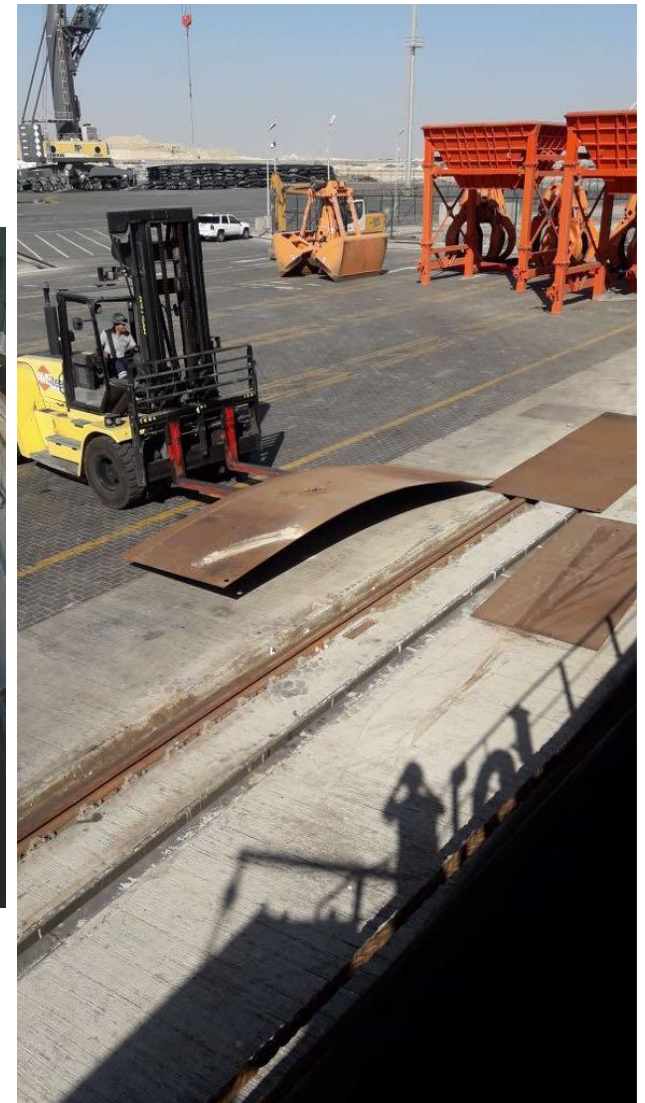
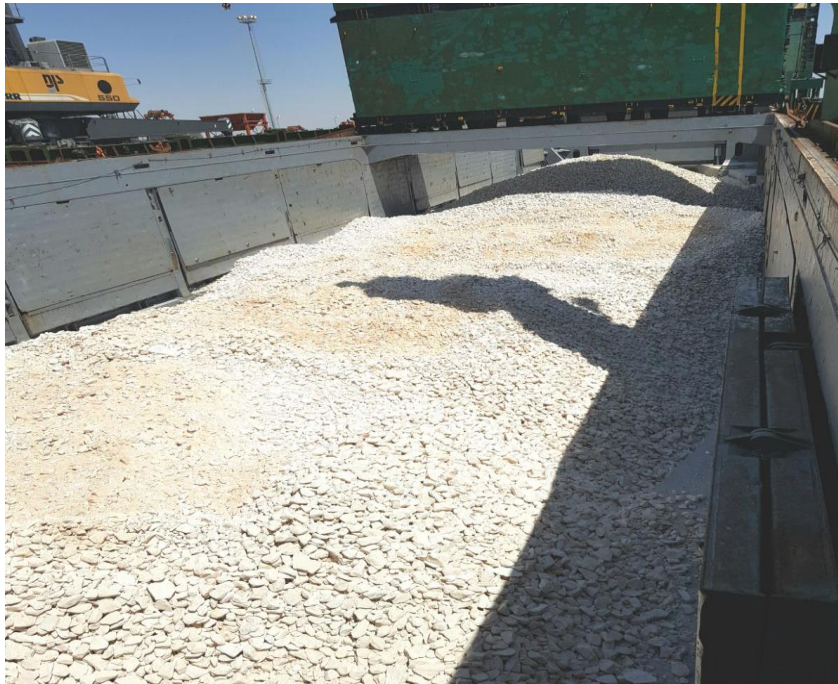
# CALCITE Vessel of KAP

M/V RUKIA - I discharged successfully

- Vessel Name : M/V RUKIA - I
- Cargo : Calcite
- Quantity : 9,931.74 Tons
- Operation Start : 1645 18<sup>th</sup> of March 2018
- Operation Finish : 0005 23<sup>rd</sup> of March 2018
- Vessel Berthing : 1215 18<sup>th</sup> of March 2018
- Vessel Departure : 0250 23<sup>rd</sup> of March 2018
- Equipment Used : 1 LHM 550 Mobile Harbor Crane
- Idle Duration : Total 15 Hours idle waiting because of truck problem, and custom waiting
- Hours Operated : 104 Hours (Rounded)
- Net Operation Duration: 89 Hours (Rounded)
- Actual Performance : 95 tons per hour
- Theoretical Performance : 112 tons per hour

**AMSTEEL handled very successfully**

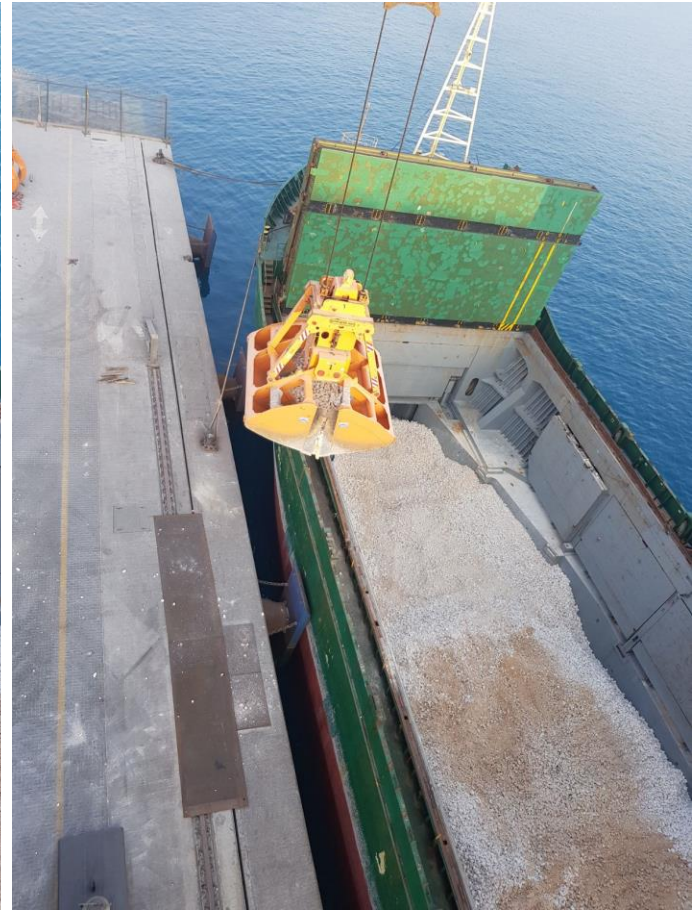
# Operational Preparation



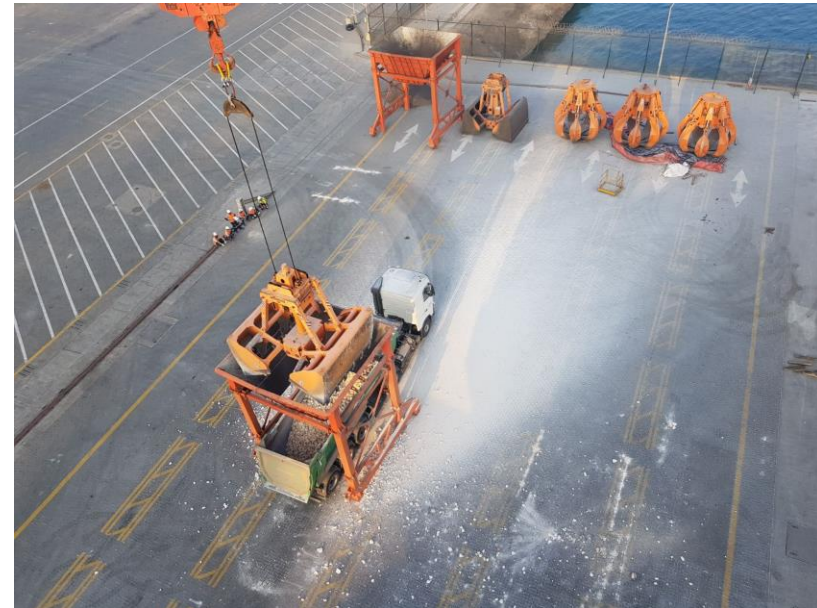
# Vessel is berthing



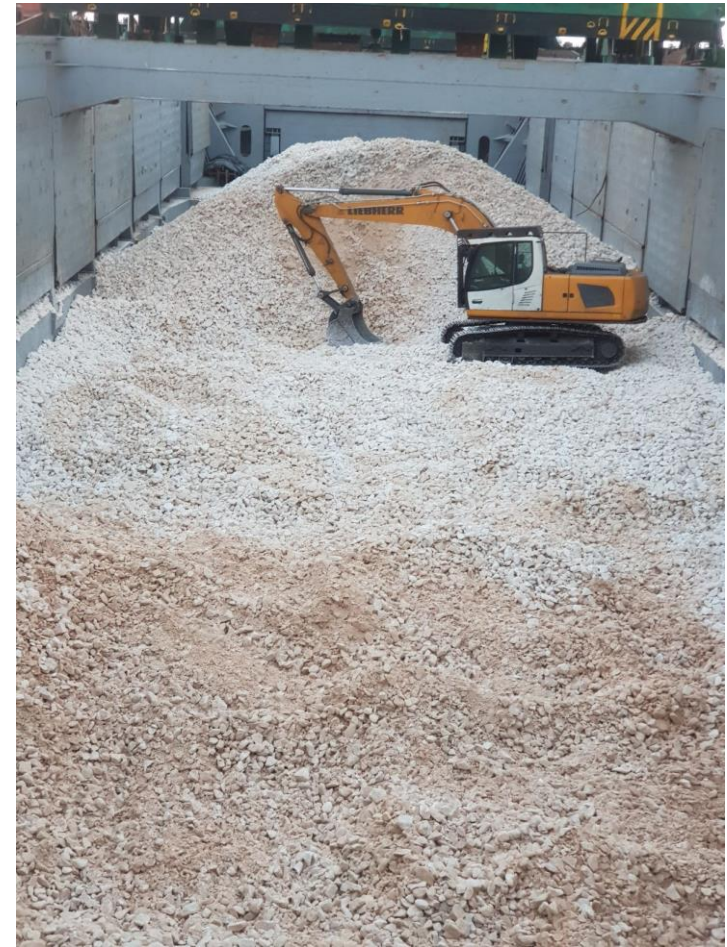
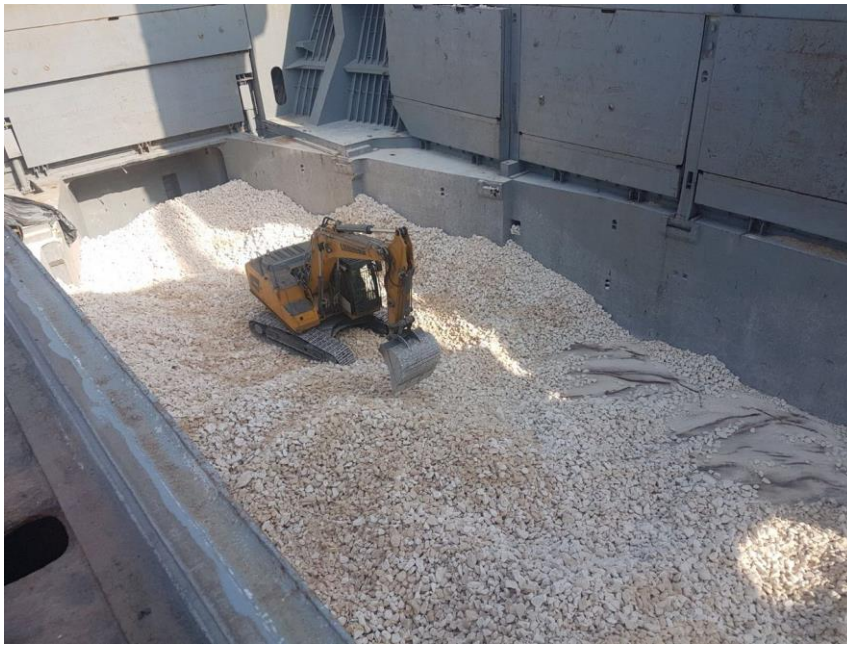
# Discharge Operations



# Discharge Operations



# Equipment Inside of Vessel

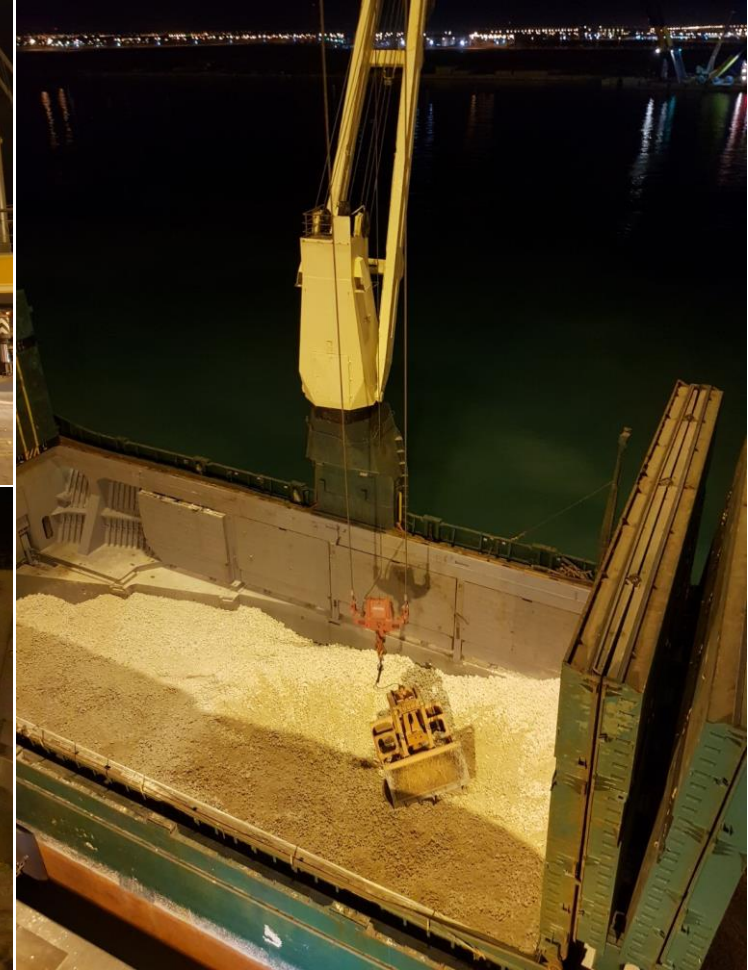




# Back Side Operation



# Night Shift Operation



# Operations Completed

M/V RUKIA - I discharged successfully



Thanks  
For Queries  
[sales@amsteel.com](mailto:sales@amsteel.com)  
[info@amsteel.com](mailto:info@amsteel.com)

